

# Ban Forest Range



## Ban Forest Range

### Forest Land

2,049.73 ha (5,065 acres)

### Administration

Ban Forest Range is divided into three blocks and eighteen beats for administrative management purposes. It comprises of 14 forest compartments which are further divided into sub compartments for better management on silvicultural basis. One Range Forest Officer (RFO), one Range Clerk (RC), three Block Officers (BOs), eighteen forest guards, two *chowkidars* and one peon are deployed by the PFD to look after the matters of Ban Forest Range.

### Locality

Geographically Ban Forest Range can be described as;

East: Covered by private lands of villages of tehsil Kotli Satiyan and state forests of Rawalpindi North Division.

North: State forests of Lower Topa/Sambli Forest Sub Divisions and private lands of *tehsil* Murree. Swan river passes through Ban Range which has bi-furcated Surba Forests from Sambli Forest Sub Division.

South: Private lands of villages of *tehsil* Kotli Satiyan and state forests of Rawalpindi North Division.

West: Private lands of *tehsil* Murree/Kotli Satiyan villages, state forests of Rawalpindi North Forest Division and Sambli Forest Sub Division are the boundary of Ban Forest Range.

### Road Network

- a. Two major roads pass through/along the forest areas of Ban Forest Range i.e.
  - i. Rawalpindi-Islamabad-Karor-Ban-Patriata Road
  - ii. Gulara Gali-Kotli Satiyan Road
- b. Eight other metalled roads run through these forests which also bisect the areas of different forest compartments and connect different villages of tehsil Murree and Kotli Satiyan.
- c. A number of non-metalled (*Kacha/shingled*) roads also pass through this sub-division. Most of these roads have been constructed illegally.
- d. Many bridle/inspection paths also exist in the area, which are used by the local population of adjoining villages and government officials.

### Watershed-River/Nullahs

Forest areas of Ban Forest Range fall in the main watershed/catchment areas of Indus and Swan River. This forest sub division also play important role in feeding Simli Dam by Swan and five other *nullahs*. Furthermore, some tributaries of Jehlum river from this area also contribute in Mangla Dam.

### Included Chaks

More than 30 *chaks* (local populations with private land ownership - called "*Shikmi chaks*") exist inside the forests of Ban Forest Range.

### Biodiversity

Ban Forest Range is mainly comprised of pine species (*Chir Pine/Pinus roxburghii*, Blue Pine (*kail*)/*Pinus wallichiana*) and mixed forest of broadleaved species (*Rein/Quercus incana*, *Kau/Olea ferruginea*, *Phullai/Acacia modesta*, *Sanatha/Dodonaea viscosa*, *Garanda/Carissa opaca*, *Ban Akhroot/Aesculus indica*, *Papular/Populus alba Linnaeus*, *Willow/Salix acmophylla*, *Rubinia/Robinia pseudo-acacia*, and *Ailanthus/Ailanthus altissima*). Ninety-two per cent of total area of Ban Forest Range is covered by the pure pine forest that includes *Kail* by 40% and *Chir* by 52%. Remaining 8% is covered by mixed broadleaved species. 1,191.39 ha (2,944 acres) are declared as Reserved Forest and remaining 858.33 ha (2,121 acres) as Protected Forest category.

Ghora Gali has frequently used terrain of Common Leopard. It has the Grey Goral, Rhesus Monkey, Koklass Pheasant and a wide variety of small mammals, reptiles, amphibians and birds.

### Legal Status of External Forest Boundaries

- i. Length of external delineated forest boundaries: 72.16 Km
- ii. Area of the delineated polygon is 2,368.53 ha (5,852.76 acres which includes roads, rivers, *nullahs*, forest area, included *chaks* etc.
- iii. Forest Boundary Pillars marked: 414
- iv. Forest Boundary Pillars newly constructed: 177
- v. No. of encroachers detected: 210
- vi. Area under the encroachment/adverse possession: 40.22 ha (99.38 acres)
- vii. No. of FIRs registered: Nil
- viii. Area under Government Buildings: 2.02 ha (5 acres)
- ix. Litigation/Civil suit cases: 1
- x. Area retrieved form encroachers: 4.29 ha (10.625 acres)



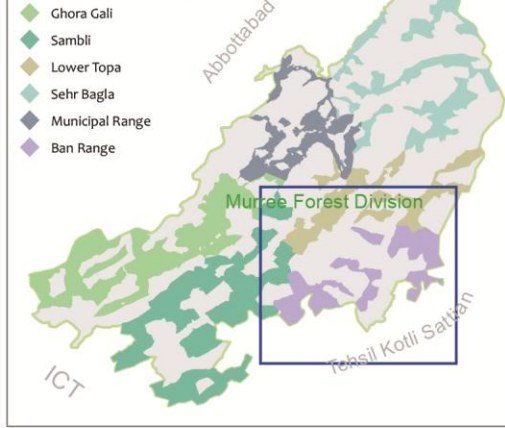


### Map Title

GIS BASED BOUNDARY DELINEATION OF MURREE FOREST DIVISION INCLUDING THE ENCROACHED FOREST SECTIONS  
ENCROACHMENT MAP (1<sup>ST</sup> EDITION 2013)  
BAN FOREST RANGE

### Map Locator

#### Forest Sub Division/Range



### Map Legend

- Locality
- ▲ Spot Height (m)
- Forest Bench Mark
- Road
- Forest Boundary
- - - Murree Forest Division
- ~ Drainage/Water channel
- Water pond/tank

### Land Status

- Ban Forest Range
- Encroachment
- Leased Area
- Transferred Land/ Govt. Buildings
- Included Chak

### Map Scale & Coordinate System

Reference Scale: 1:50,000 on A3 size paper

Coordinate System: GCS WGS 1984

Datum: WGS 1984

Grids and Graticule:

Geographic Grid: WGS 1984

Value in: DD° MM' SS"

0 1 2 Kilometres

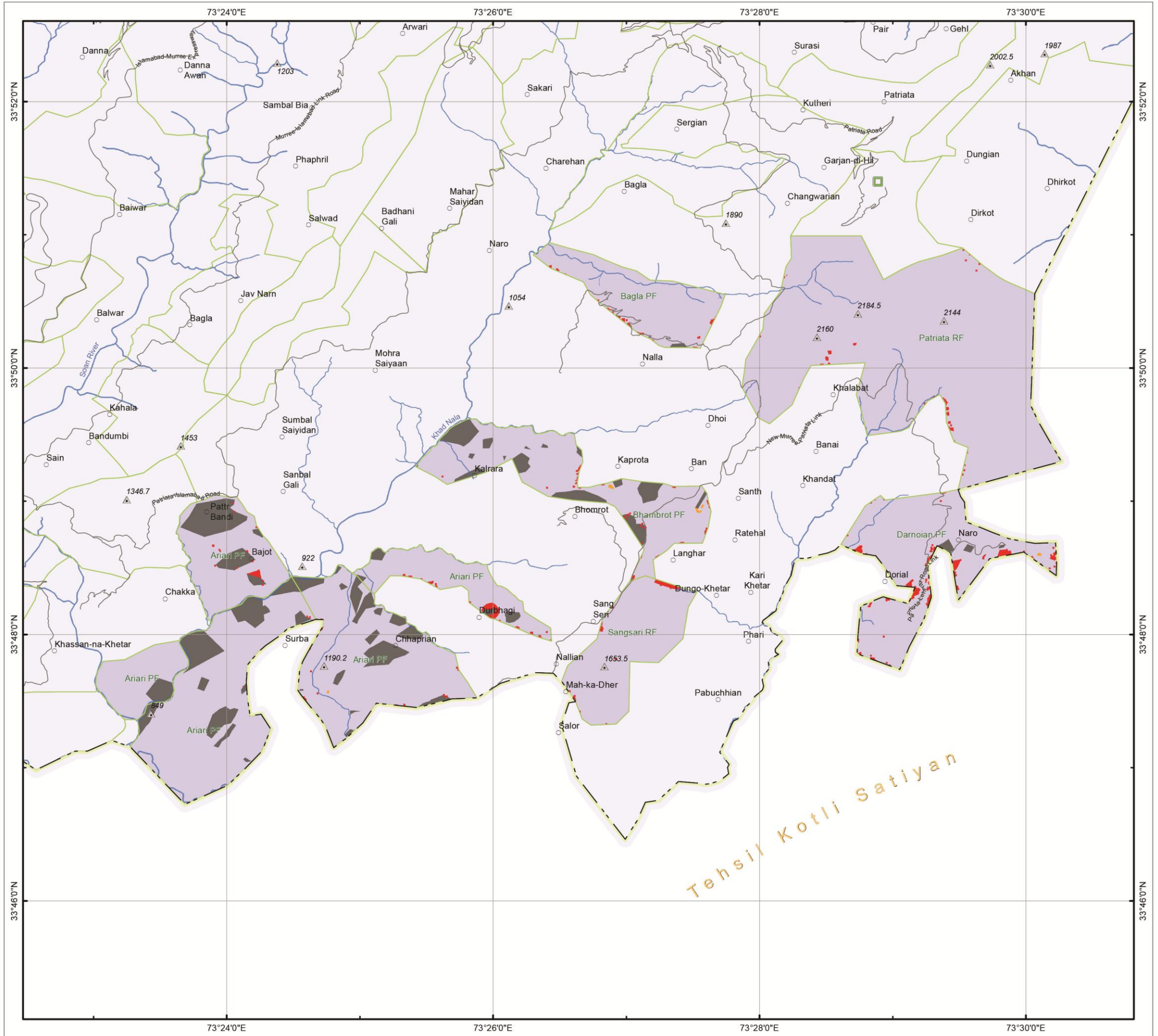


### Map Credits

Map Produced by: GIS Laboratory, WWF - Pakistan in February, 2013

#### Copyrights:

It is an offence under the Copyright Act to make and issue any copy or copies of this map or any part of this map with or without alterations and additions, unless the prior written permission of the concerned department has been obtained.



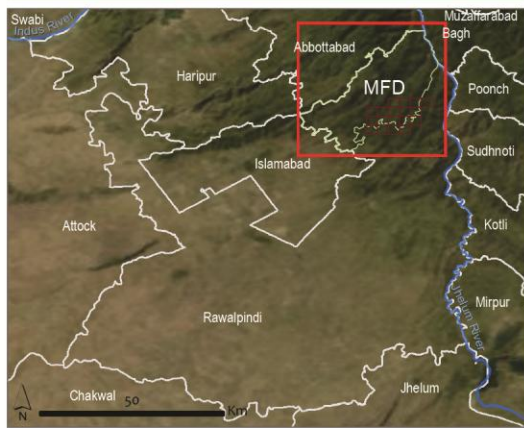


**Map Title**  
 GIS BASED BOUNDARY DELINEATION OF MURREE FOREST DIVISION INCLUDING THE ENCROACHED FOREST SECTIONS INDEX TO MAPS (1<sup>ST</sup> EDITION 2013) BAN FOREST RANGE

**Map Locator**



**Map Index**



**Map Scale & Coordinate System**

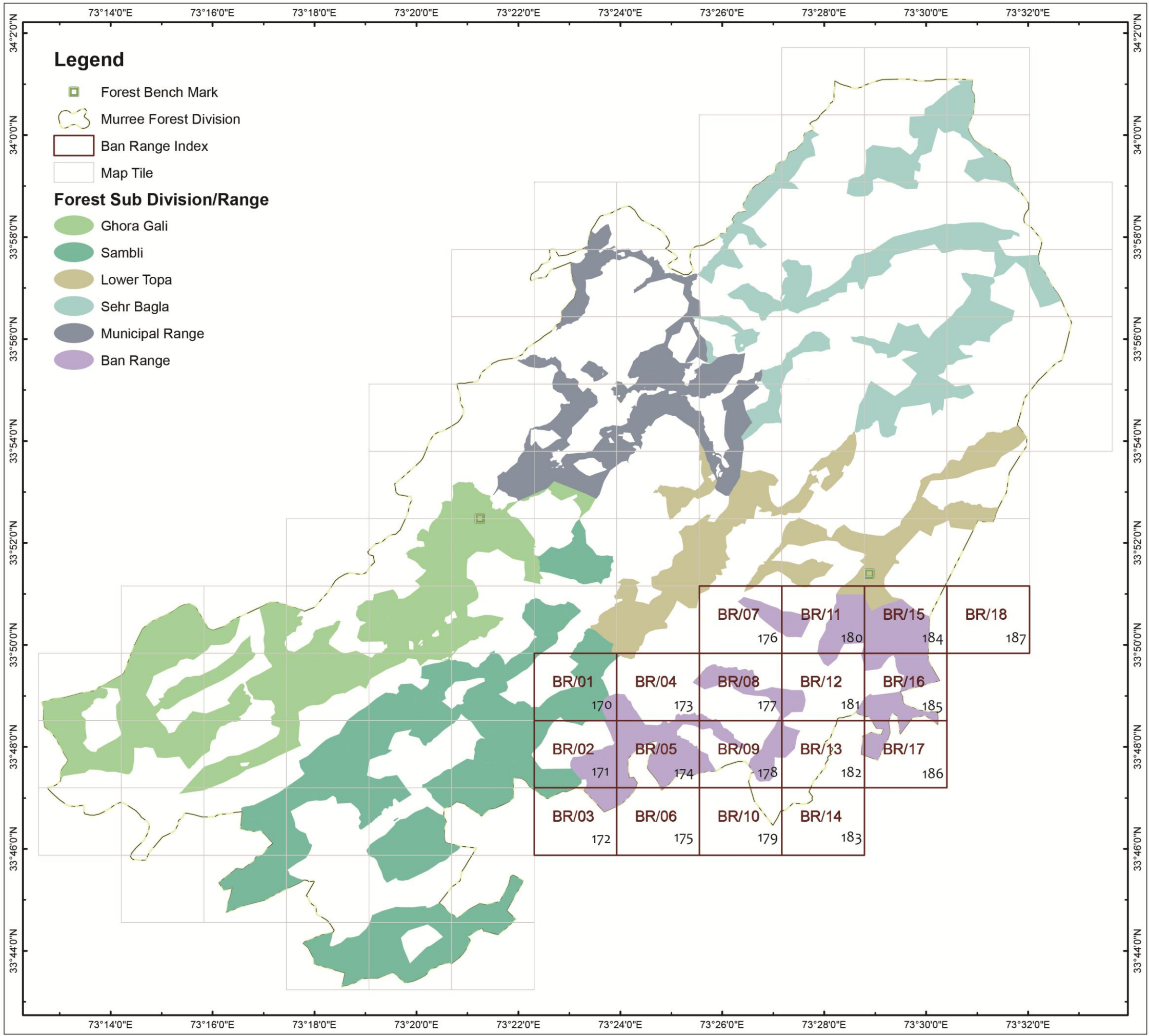
Reference Scale: 1:130,000 on A3 size paper  
 Coordinate System: GCS WGS 1984  
 Datum: WGS 1984  
 Grids and Graticule:  
 Geographic Grid: WGS 1984  
 Value in: DD° MM' SS"  
 0 2.5 5 Kilometres

**Map Index Legend**

**Reading the Index**  
 BR/01 Map Tile ID  
 00 Map Page Number

**Map Credits**

Map Produced by: GIS Laboratory, WWF - Pakistan in February, 2013  
 Copyrights:  
 It is an offence under the Copyright Act to make and issue any copy or copies of this map or any part of this map with or without alterations and additions, unless the prior written permission of the concerned department has been obtained.





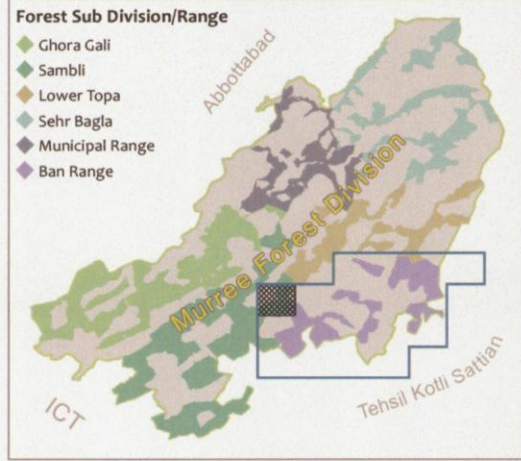
**Map Title**

GIS BASED BOUNDARY DELINEATION OF MURREE FOREST DIVISION INCLUDING THE ENCROACHED FOREST SECTIONS  
 MAP ID : BR/01 (1<sup>ST</sup> EDITION 2013)  
 BAN FOREST RANGE

**Map Locator**

**Forest Sub Division/Range**

- ◆ Ghora Gali
- ◆ Sambli
- ◆ Lower Topa
- ◆ Sehr Bagla
- ◆ Municipal Range
- ◆ Ban Range

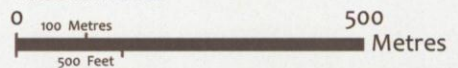


**Map Index**



**Map Scale & Coordinate System**

**Reference Scale:** 1:10,000 on A3 size paper  
 1 inch ~ 278 yards or 1 centimetre ~ 100 metres  
**Coordinate System:** GCS WGS 1984  
 Datum: WGS 1984  
**Grids and Graticule:**  
 Geographic Grid: WGS 1984  
 Value in: DD° MM' SS"  
 Metric Grid: UTM Zone 43S  
 Value in: Metres



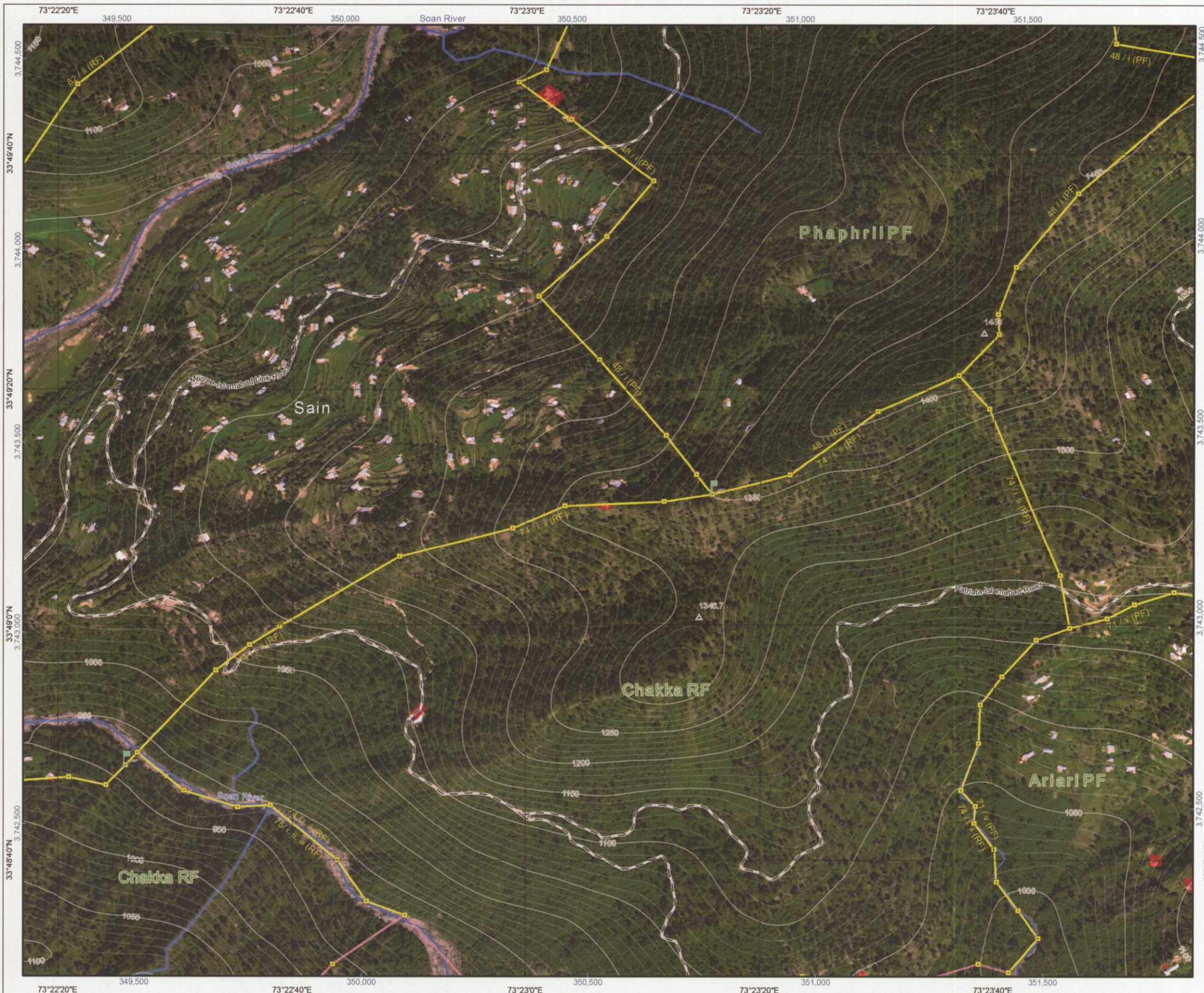
**Map Legend**

- Pillar Mark
- Forest Boundary
- Forest Bench Mark
- Ambiguity Area
- Sehadda
- Included Chak
- ▲ Spot Height (m)
- Murree Forest Division
- Road
- Water Channel/Nullah
- Contour (m)
- Water Pond/Tank
- Contour interval: 50m (164 ft)
- Encroachment

**Map Credits**

**Map Produced by:** GIS Laboratory, WWF - Pakistan in February, 2013

**Copyrights:**  
 It is an offence under the Copyright Act to make and issue any copy or copies of this map or any part of this map with or without alterations and additions, unless the prior written permission of the concerned department has been obtained.



**Divisional Forest Officer**  
 Murree Forest Division  
 Punjab Forest Department



**Officer-in-Charge**  
 No. 4 Party,  
 Survey of Pakistan, Murree



**Tehsildar Murree**  
 Punjab Revenue Department



**Manager GIS**  
 GIS Laboratory  
 World Wide Fund for Nature - Pakistan



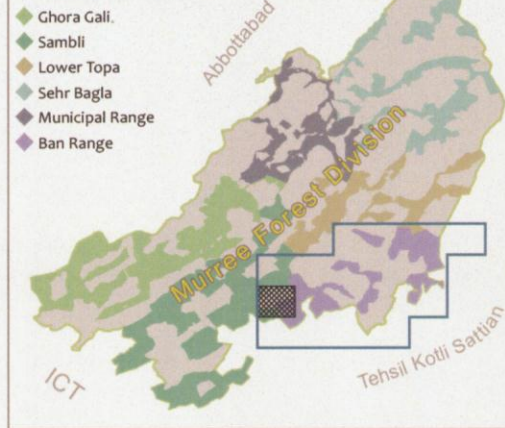


**Map Title**

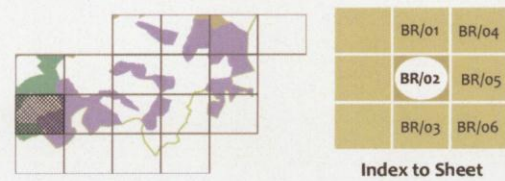
GIS BASED BOUNDARY DELINEATION OF MURREE FOREST DIVISION INCLUDING THE ENCROACHED FOREST SECTIONS  
 MAP ID : BR/02 (1<sup>st</sup> EDITION 2013)  
 BAN FOREST RANGE

**Map Locator**

**Forest Sub Division/Range**



**Map Index**



**Map Scale & Coordinate System**

**Reference Scale:** 1:10,000 on A3 size paper  
 1 inch ~ 278 yards or 1 centimetre ~ 100 metres  
**Coordinate System:** GCS WGS 1984  
 Datum: WGS 1984  
**Grids and Graticule:**  
 Geographic Grid: WGS 1984  
 Value in: DD° MM' SS"  
 Metric Grid: UTM Zone 43S  
 Value in: Metres



**Map Legend**

- Pillar Mark
- Forest Boundary
- Forest Bench Mark
- Ambiguity Area
- Sehadda
- Included Chak
- Spot Height (m)
- Murree Forest Division
- Road
- Water Channel/Nullah
- Water Pond/Tank
- Contour (m)  
Contour interval: 50m (164 ft)
- Encroachment

**Map Credits**

**Map Produced by:** GIS Laboratory, WWF - Pakistan in February, 2013

Copyrights:  
 It is an offence under the Copyright Act to make and issue any copy or copies of this map or any part of this map with or without alterations and additions, unless the prior written permission of the concerned department has been obtained.



**Divisional Forest Officer**  
 Murree Forest Division  
 Punjab Forest Department



**Officer-in-Charge**  
 No. 4 Party,  
 Survey of Pakistan, Murree



**Fehsildar Murree**  
 Punjab Revenue Department



**Manager GIS**  
 GIS Laboratory  
 World Wide Fund for Nature - Pakistan



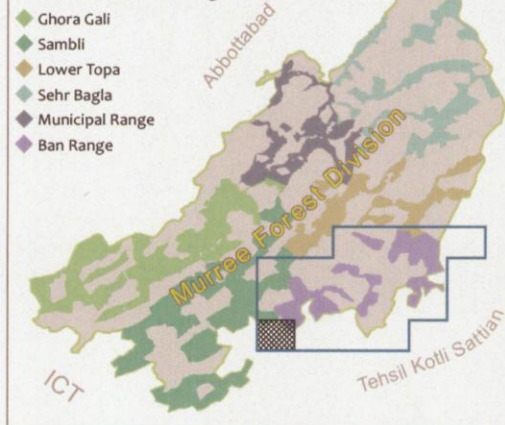


**Map Title**

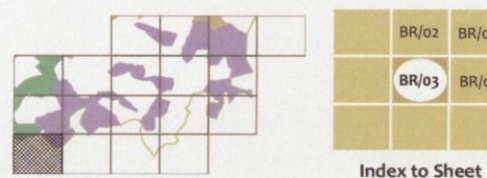
GIS BASED BOUNDARY DELINEATION OF MURREE FOREST DIVISION INCLUDING THE ENCROACHED FOREST SECTIONS  
 MAP ID : BR/03 (1<sup>st</sup> EDITION 2013)  
 BAN FOREST RANGE

**Map Locator**

**Forest Sub Division/Range**



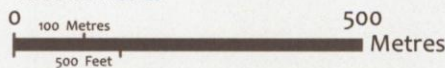
**Map Index**



Index to Sheet

**Map Scale & Coordinate System**

**Reference Scale:** 1:10,000 on A3 size paper  
 1 inch ~ 278 yards or 1 centimetre ~ 100 metres  
**Coordinate System:** GCS WGS 1984  
 Datum: WGS 1984  
**Grids and Graticule:**  
 Geographic Grid: WGS 1984  
 Value in: DD° MM' SS"  
 Metric Grid: UTM Zone 43S  
 Value in: Metres



**Map Legend**

- Pillar Mark
- Forest Bench Mark
- Sehadha
- Spot Height (m)
- Road
- Contour (m)
- Contour interval: 50m (164 ft)
- Forest Boundary
- Ambiguity Area
- Inculded Chak
- Murree Forest Division
- Water Channel/Nullah
- Water Pond/Tank
- Encroachment

**Map Credits**

**Map Produced by:** GIS Laboratory, WWF - Pakistan in February, 2013

**Copyrights:**  
 It is an offence under the Copyright Act to make and issue any copy or copies of this map or any part of this map with or without alterations and additions, unless the prior written permission of the concerned department has been obtained.



**Divisional Forest Officer**  
 Murree Forest Division  
 Punjab Forest Department



**Officer-in-Charge**  
 No. 4 Party,  
 Survey of Pakistan, Murree



**Tehsildar Murree**  
 Punjab Revenue Department



**Manager GIS**  
 GIS Laboratory  
 World Wide Fund for Nature - Pakistan



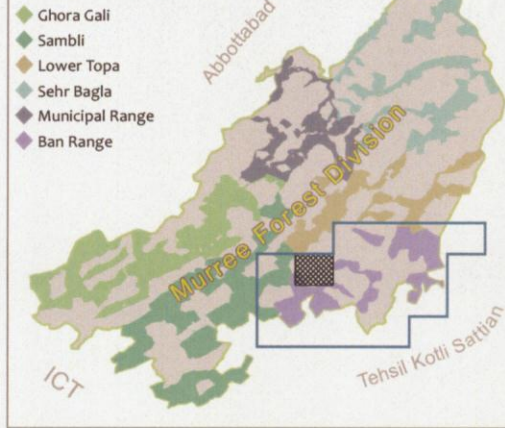


**Map Title**

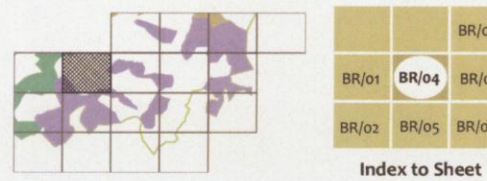
GIS BASED BOUNDARY DELINEATION OF MURREE FOREST DIVISION INCLUDING THE ENCROACHED FOREST SECTIONS  
 MAP ID : BR/04 (1<sup>ST</sup> EDITION 2013)  
 BAN FOREST RANGE

**Map Locator**

**Forest Sub Division/Range**



**Map Index**



**Map Scale & Coordinate System**

**Reference Scale:** 1:10,000 on A3 size paper  
 1 inch ~ 278 yards or 1 centimetre ~ 100 metres  
**Coordinate System:** GCS WGS 1984  
 Datum: WGS 1984  
**Grids and Graticule:**  
 Geographic Grid: WGS 1984  
 Value in: DD° MM' SS"  
 Metric Grid: UTM Zone 43S  
 Value in: Metres



**Map Legend**

- Pillar Mark
  - Forest Boundary
  - Forest Bench Mark
  - Ambiguity Area
  - Sehadda
  - Inculded Chak
  - Spot Height (m)
  - Murree Forest Division
  - Road
  - Water Channel/Nullah
  - Contour (m)
  - Water Pond/Tank
  - Encroachment
- Contour interval: 50m (164 ft)

**Map Credits**

**Map Produced by:** GIS Laboratory, WWF - Pakistan in February, 2013

**Copyrights:**  
 It is an offence under the Copyright Act to make and issue any copy or copies of this map or any part of this map with or without alterations and additions, unless the prior written permission of the concerned department has been obtained.



**Divisional Forest Officer**  
 Murree Forest Division  
 Punjab Forest Department



**Officer-in-Charge**  
 No. 4 Party,  
 Survey of Pakistan, Murree



**Tehsildar Murree**  
 Punjab Revenue Department



**Manager GIS**  
 GIS Laboratory  
 World Wide Fund for Nature - Pakistan



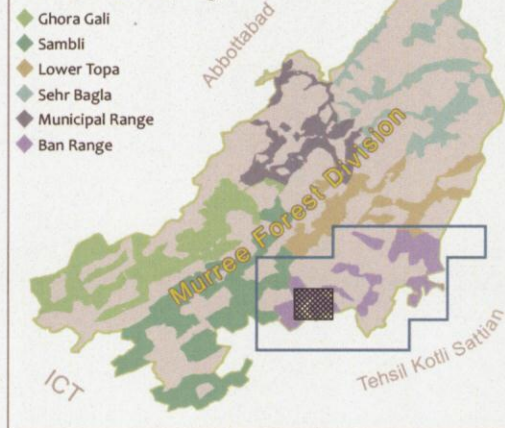


**Map Title**

GIS BASED BOUNDARY DELINEATION OF MURREE FOREST DIVISION INCLUDING THE ENCREACHED FOREST SECTIONS  
 MAP ID : BR/05 (1<sup>st</sup> EDITION 2013)  
 BAN FOREST RANGE

**Map Locator**

**Forest Sub Division/Range**

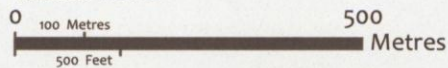


**Map Index**



**Map Scale & Coordinate System**

**Reference Scale:** 1:10,000 on A3 size paper  
 1 inch ~ 278 yards or 1 centimetre ~ 100 metres  
**Coordinate System:** GCS WGS 1984  
 Datum: WGS 1984  
**Grids and Graticule:**  
 Geographic Grid: WGS 1984  
 Value in: DD° MM' SS"  
 Metric Grid: UTM Zone 43S  
 Value in: Metres



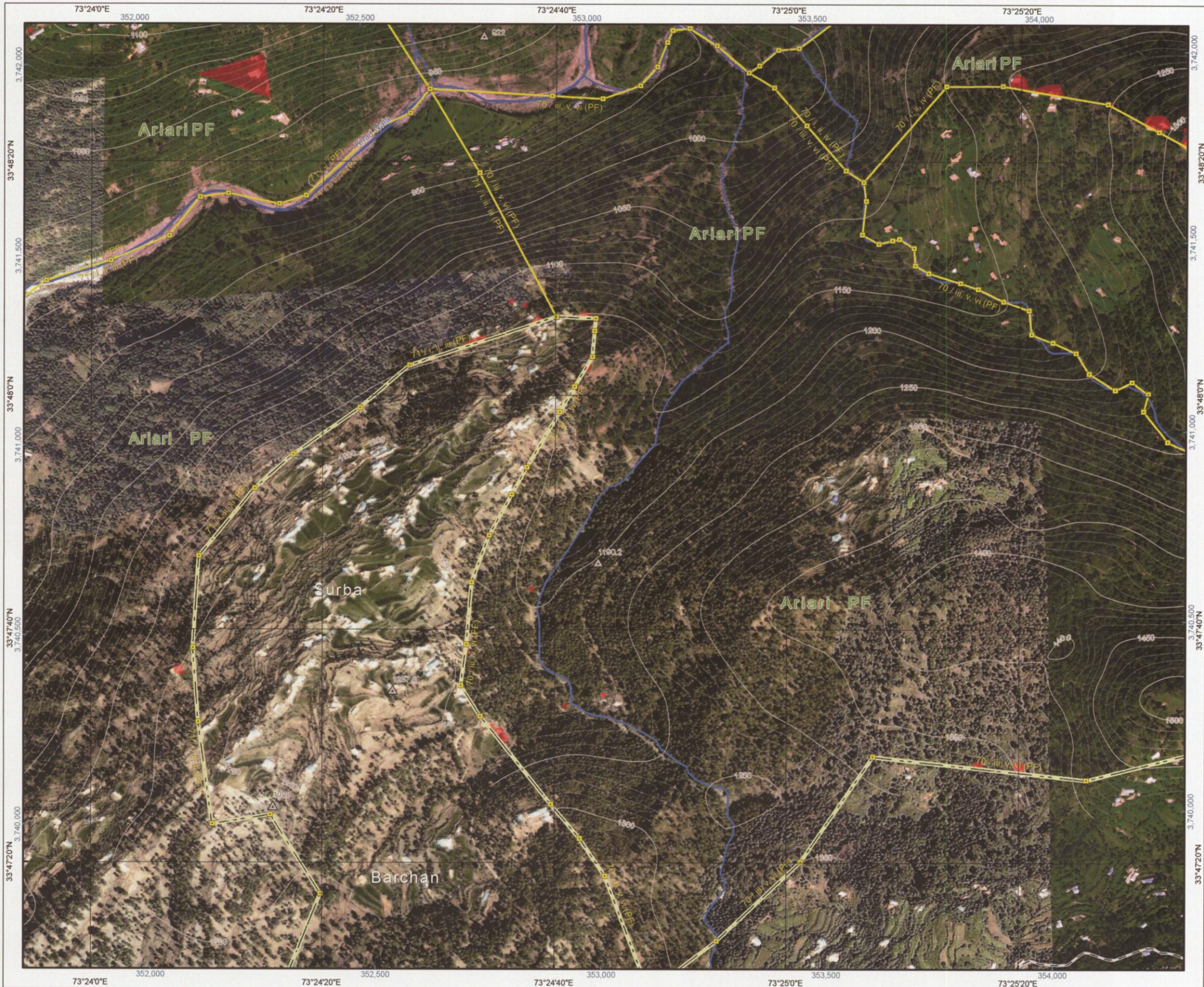
**Map Legend**

- Pillar Mark
  - Forest Boundary
  - Forest Bench Mark
  - Ambiguity Area
  - Sehadha
  - Inculded Chak
  - Spot Height (m)
  - Murree Forest Division
  - Road
  - Water Channel/Nullah
  - Contour (m)
  - Water Pond/Tank
  - Encroachment
- Contour interval: 50m (164 ft)

**Map Credits**

Map Produced by: GIS Laboratory, WWF - Pakistan in February, 2013

Copyrights:  
 It is an offence under the Copyright Act to make and issue any copy or copies of this map or any part of this map with or without alterations and additions, unless the prior written permission of the concerned department has been obtained.



**Divisional Forest Officer**  
 Murree Forest Division  
 Punjab Forest Department



**Officer-in-Charge**  
 No. 4 Party,  
 Survey of Pakistan, Murree



**Tehsildar Murree**  
 Punjab Revenue Department



**Manager GIS**  
 GIS Laboratory  
 World Wide Fund for Nature - Pakistan



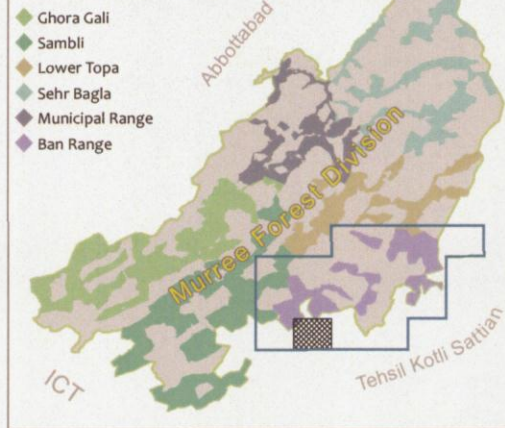


### Map Title

GIS BASED BOUNDARY DELINEATION OF MURREE FOREST DIVISION INCLUDING THE ENCROACHED FOREST SECTIONS  
 MAP ID : BR/06 (1<sup>st</sup> EDITION 2013)  
 BAN FOREST RANGE

### Map Locator

#### Forest Sub Division/Range



### Map Index



Index to Sheet

### Map Scale & Coordinate System

**Reference Scale:** 1:10,000 on A3 size paper  
 1 inch ~ 278 yards or 1 centimetre ~ 100 metres

**Coordinate System:** GCS WGS 1984

Datum: WGS 1984

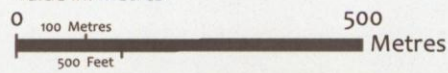
**Grids and Graticule:**

Geographic Grid: WGS 1984

Value in: DD° MM' SS"

Metric Grid: UTM Zone 43S

Value in: Metres



### Map Legend

- Pillar Mark
- Forest Bench Mark
- Sehadda
- Spot Height (m)
- Road
- Contour (m)
- Contour interval: 50m (164 ft)
- Forest Boundary
- Ambiguity Area
- Inculded Chak
- Murree Forest Division
- Water Channel/Nullah
- Water Pond/Tank
- Encroachment

### Map Credits

**Map Produced by:** GIS Laboratory, WWF - Pakistan in February, 2013

Copyrights:  
 It is an offence under the Copyright Act to make and issue any copy or copies of this map or any part of this map with or without alterations and additions, unless the prior written permission of the concerned department has been obtained.



**Divisional Forest Officer**  
 Murree Forest Division  
 Punjab Forest Department



**Officer-in-Charge**  
 No. 4 Party,  
 Survey of Pakistan, Murree



**Tehsildar Murree**  
 Punjab Revenue Department



**Manager GIS**  
 GIS Laboratory  
 World Wide Fund for Nature - Pakistan





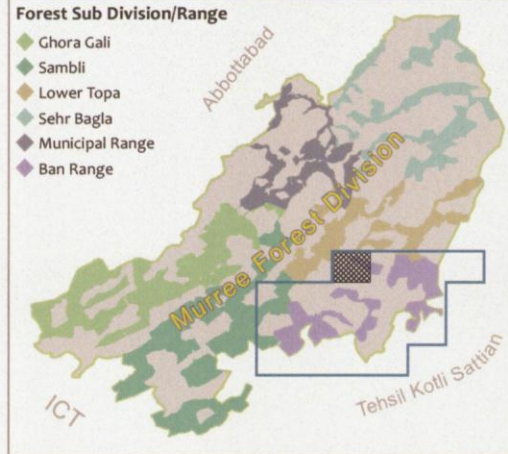
**Map Title**

GIS BASED BOUNDARY DELINEATION OF MURREE FOREST DIVISION INCLUDING THE ENCROACHED FOREST SECTIONS  
 MAP ID : BR/07 (1<sup>st</sup> EDITION 2013)  
 BAN FOREST RANGE

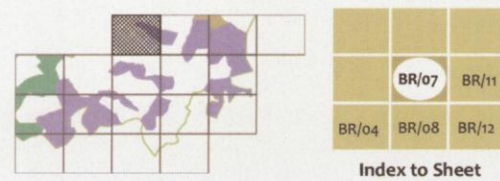
**Map Locator**

**Forest Sub Division/Range**

- ◆ Ghora Gali
- ◆ Sambli
- ◆ Lower Topa
- ◆ Sehr Bagla
- ◆ Municipal Range
- ◆ Ban Range



**Map Index**



**Map Scale & Coordinate System**

**Reference Scale:** 1:10,000 on A3 size paper  
 1 inch ~ 278 yards or 1 centimetre ~ 100 metres  
**Coordinate System:** GCS WGS 1984  
 Datum: WGS 1984  
**Grids and Graticule:**  
 Geographic Grid: WGS 1984  
 Value in: DD° MM' SS"  
 Metric Grid: UTM Zone 43S  
 Value in: Metres



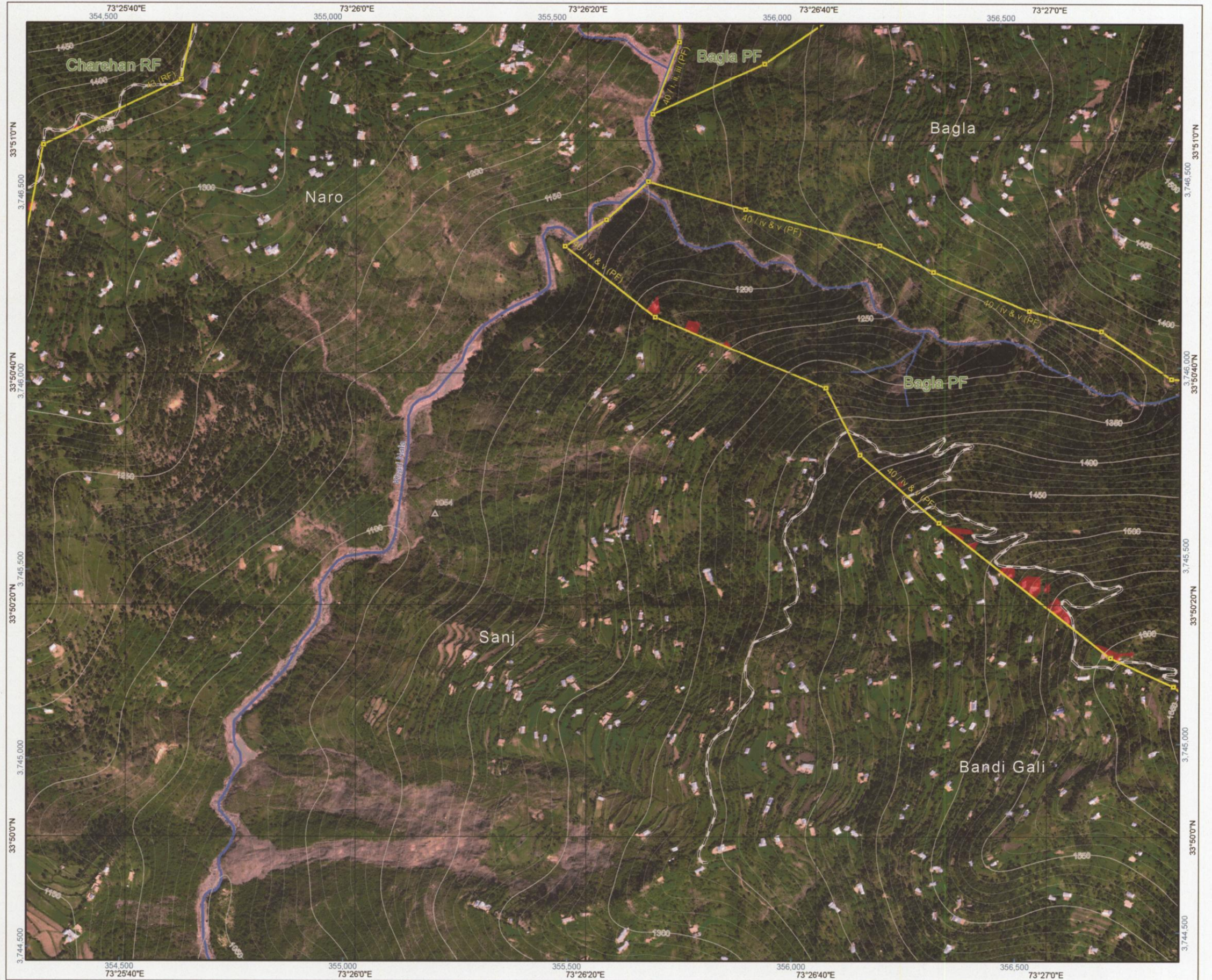
**Map Legend**

- Pillar Mark
- Forest Bench Mark
- ▭ Sehadha
- ▲ Spot Height (m)
- Road
- Contour (m)
- Contour interval: 50m (164 ft)
- Forest Boundary
- Ambiguity Area
- Inculded Chak
- Murree Forest Division
- Water Channel/Nullah
- Water Pond/Tank
- Encroachment

**Map Credits**

**Map Produced by:** GIS Laboratory, WWF - Pakistan in February, 2013

**Copyrights:**  
 It is an offence under the Copyright Act to make and issue any copy or copies of this map or any part of this map with or without alterations and additions, unless the prior written permission of the concerned department has been obtained.



**Divisional Forest Officer**  
 Murree Forest Division  
 Punjab Forest Department



**Officer-in-Charge**  
 No. 4 Party,  
 Survey of Pakistan, Murree



**Tehsildar Murree**  
 Punjab Revenue Department



**Manager GIS**  
 GIS Laboratory  
 World Wide Fund for Nature - Pakistan



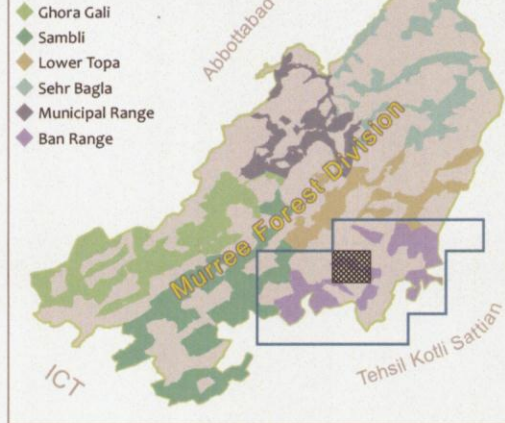


**Map Title**

GIS BASED BOUNDARY DELINEATION OF MURREE FOREST DIVISION INCLUDING THE ENCROACHED FOREST SECTIONS  
 MAP ID : BR/08 (1<sup>ST</sup> EDITION 2013)  
 BAN FOREST RANGE

**Map Locator**

**Forest Sub Division/Range**

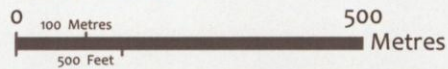


**Map Index**



**Map Scale & Coordinate System**

**Reference Scale:** 1:10,000 on A3 size paper  
 1 inch ~ 278 yards or 1 centimetre ~ 100 metres  
**Coordinate System:** GCS WGS 1984  
 Datum: WGS 1984  
**Grids and Graticule:**  
 Geographic Grid: WGS 1984  
 Value in: DD° MM' SS"  
 Metric Grid: UTM Zone 43S  
 Value in: Metres



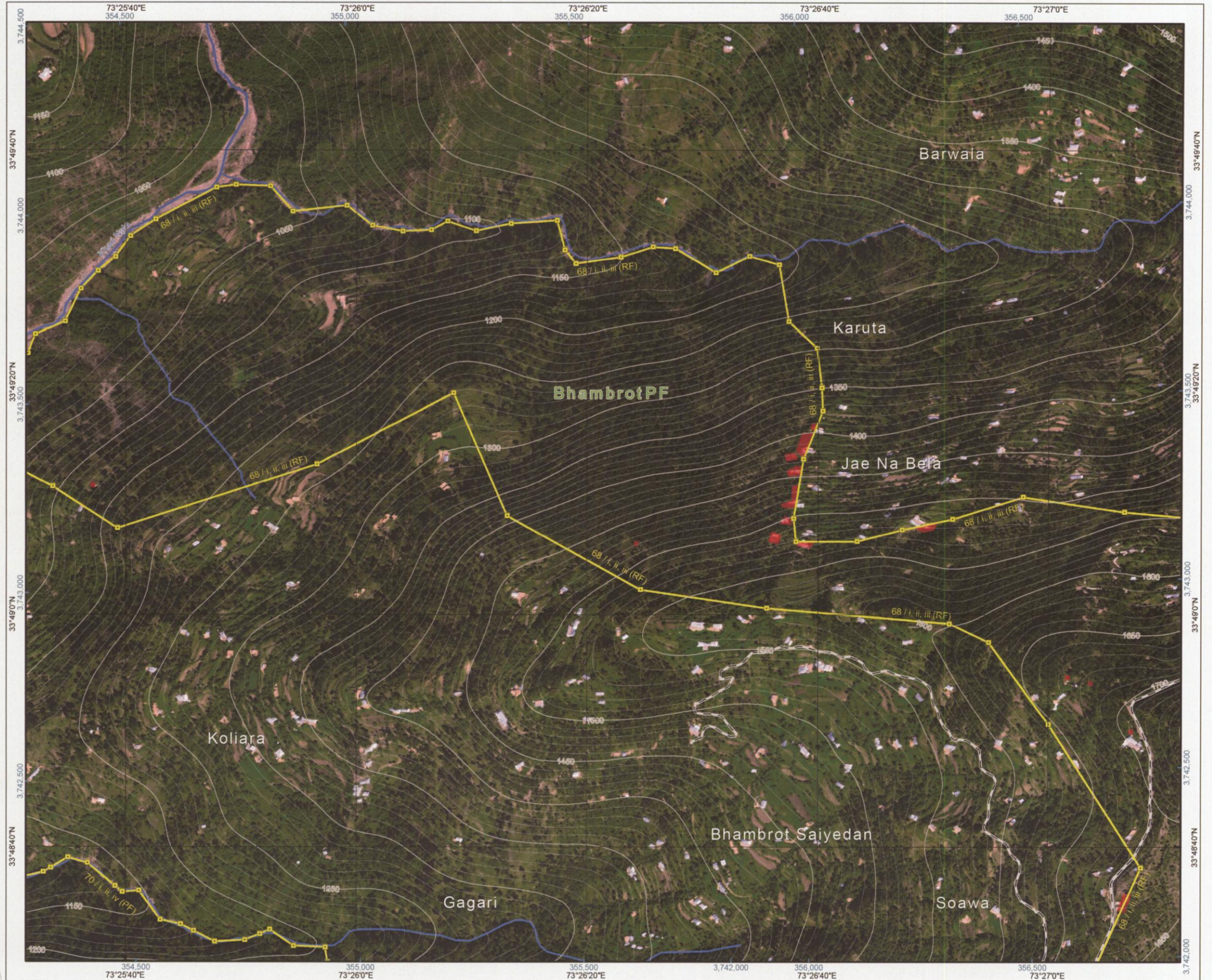
**Map Legend**

- Pillar Mark
  - Forest Boundary
  - Forest Bench Mark
  - Ambiguity Area
  - Sehadda
  - Inculded Chak
  - Spot Height (m)
  - Murree Forest Division
  - Water Channel/Nullah
  - Road
  - Water Pond/Tank
  - Contour (m)
  - Encroachment
- Contour interval: 50m (164 ft)

**Map Credits**

**Map Produced by:** GIS Laboratory, WWF - Pakistan in February, 2013

**Copyrights:**  
 It is an offence under the Copyright Act to make and issue any copy or copies of this map or any part of this map with or without alterations and additions, unless the prior written permission of the concerned department has been obtained.



**Divisional Forest Officer**  
 Murree Forest Division  
 Punjab Forest Department



**Officer-in-Charge**  
 No. 4 Party,  
 Survey of Pakistan, Murree



**Tehsildar Murree**  
 Punjab Revenue Department



**Manager GIS**  
 GIS Laboratory  
 World Wide Fund for Nature - Pakistan



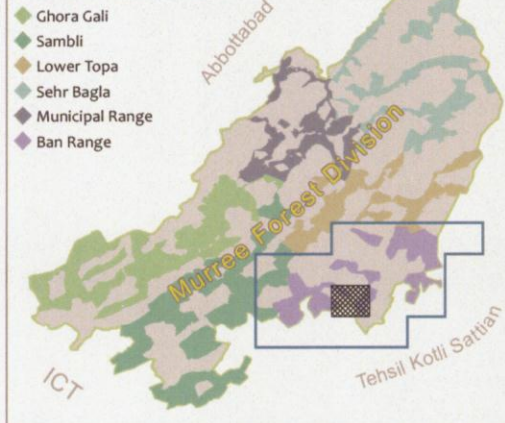


**Map Title**

GIS BASED BOUNDARY DELINEATION OF MURREE FOREST DIVISION INCLUDING THE ENCROACHED FOREST SECTIONS  
 MAP ID : BR/09 (1<sup>ST</sup> EDITION 2013)  
 BAN FOREST RANGE

**Map Locator**

**Forest Sub Division/Range**

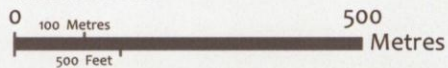


**Map Index**



**Map Scale & Coordinate System**

**Reference Scale:** 1:10,000 on A3 size paper  
 1 inch ~ 278 yards or 1 centimetre ~ 100 metres  
**Coordinate System:** GCS WGS 1984  
 Datum: WGS 1984  
**Grids and Graticule:**  
 Geographic Grid: WGS 1984  
 Value in: DD° MM' SS"  
 Metric Grid: UTM Zone 43S  
 Value in: Metres



**Map Legend**

- Pillar Mark
  - Forest Boundary
  - Forest Bench Mark
  - Ambiguity Area
  - Included Chak
  - Sehadda
  - Murree Forest Division
  - Spot Height (m)
  - Water Channel/Nullah
  - Road
  - Water Pond/Tank
  - Contour (m)
  - Encroachment
- Contour interval: 50m (164 ft)

**Map Credits**

**Map Produced by:** GIS Laboratory, WWF - Pakistan in February, 2013

**Copyrights:**  
 It is an offence under the Copyright Act to make and issue any copy or copies of this map or any part of this map with or without alterations and additions, unless the prior written permission of the concerned department has been obtained.



**Divisional Forest Officer**  
 Murree Forest Division  
 Punjab Forest Department



**Officer-in-Charge**  
 No. 4 Party,  
 Survey of Pakistan, Murree



**Tehsildar Murree**  
 Punjab Revenue Department



**Manager GIS**  
 GIS Laboratory  
 World Wide Fund for Nature - Pakistan



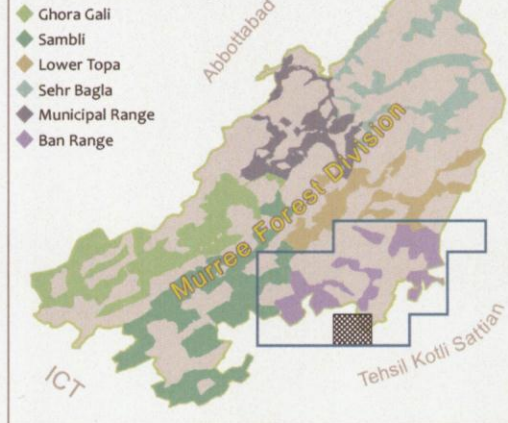


**Map Title**

GIS BASED BOUNDARY DELINEATION OF MURREE FOREST DIVISION INCLUDING THE ENCROACHED FOREST SECTIONS  
 MAP ID : BR/10 (1<sup>st</sup> EDITION 2013)  
 BAN FOREST RANGE

**Map Locator**

**Forest Sub Division/Range**

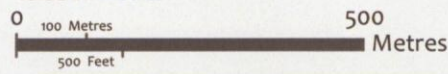


**Map Index**



**Map Scale & Coordinate System**

**Reference Scale:** 1:10,000 on A3 size paper  
 1 inch ~ 278 yards or 1 centimetre ~ 100 metres  
**Coordinate System:** GCS WGS 1984  
 Datum: WGS 1984  
**Grids and Graticule:**  
 Geographic Grid: WGS 1984  
 Value in: DD° MM' SS"  
 Metric Grid: UTM Zone 43S  
 Value in: Metres



**Map Legend**

- Pillar Mark
- Forest Bench Mark
- ▭ Sehadra
- ▲ Spot Height (m)
- Road
- Contour (m)  
Contour interval: 50m (164 ft)
- Forest Boundary
- Ambiguity Area
- Inculded Chak
- Murree Forest Division
- Water Channel/Nullah
- Water Pond/Tank
- Encroachment

**Map Credits**

Map Produced by: GIS Laboratory, WWF - Pakistan in February, 2013

Copyrights:  
 It is an offence under the Copyright Act to make and issue any copy or copies of this map or any part of this map with or without alterations and additions, unless the prior written permission of the concerned department has been obtained.



**Divisional Forest Officer**  
 Murree Forest Division  
 Punjab Forest Department



**Officer-in-Charge**  
 No. 4 Party,  
 Survey of Pakistan, Murree



**Tehsildar Murree**  
 Punjab Revenue Department



**Manager GIS**  
 GIS Laboratory  
 World Wide Fund for Nature - Pakistan



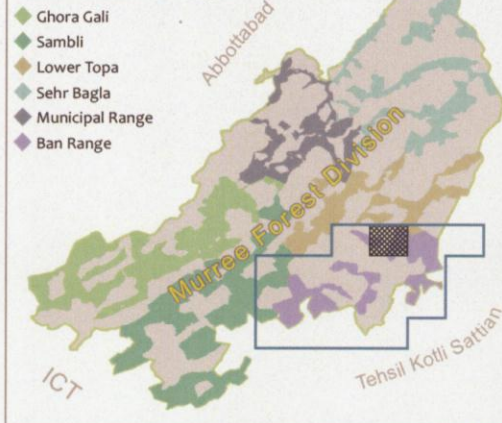


**Map Title**

GIS BASED BOUNDARY DELINEATION OF MURREE FOREST DIVISION INCLUDING THE ENCROACHED FOREST SECTIONS  
 MAP ID : BR/11 (1<sup>st</sup> EDITION 2013)  
 BAN FOREST RANGE

**Map Locator**

**Forest Sub Division/Range**

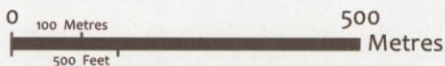


**Map Index**



**Map Scale & Coordinate System**

**Reference Scale:** 1:10,000 on A3 size paper  
 1 inch ~ 278 yards or 1 centimetre ~ 100 metres  
**Coordinate System:** GCS WGS 1984  
 Datum: WGS 1984  
**Grids and Graticule:**  
 Geographic Grid: WGS 1984  
 Value in: DD° MM' SS"  
 Metric Grid: UTM Zone 43S  
 Value in: Metres



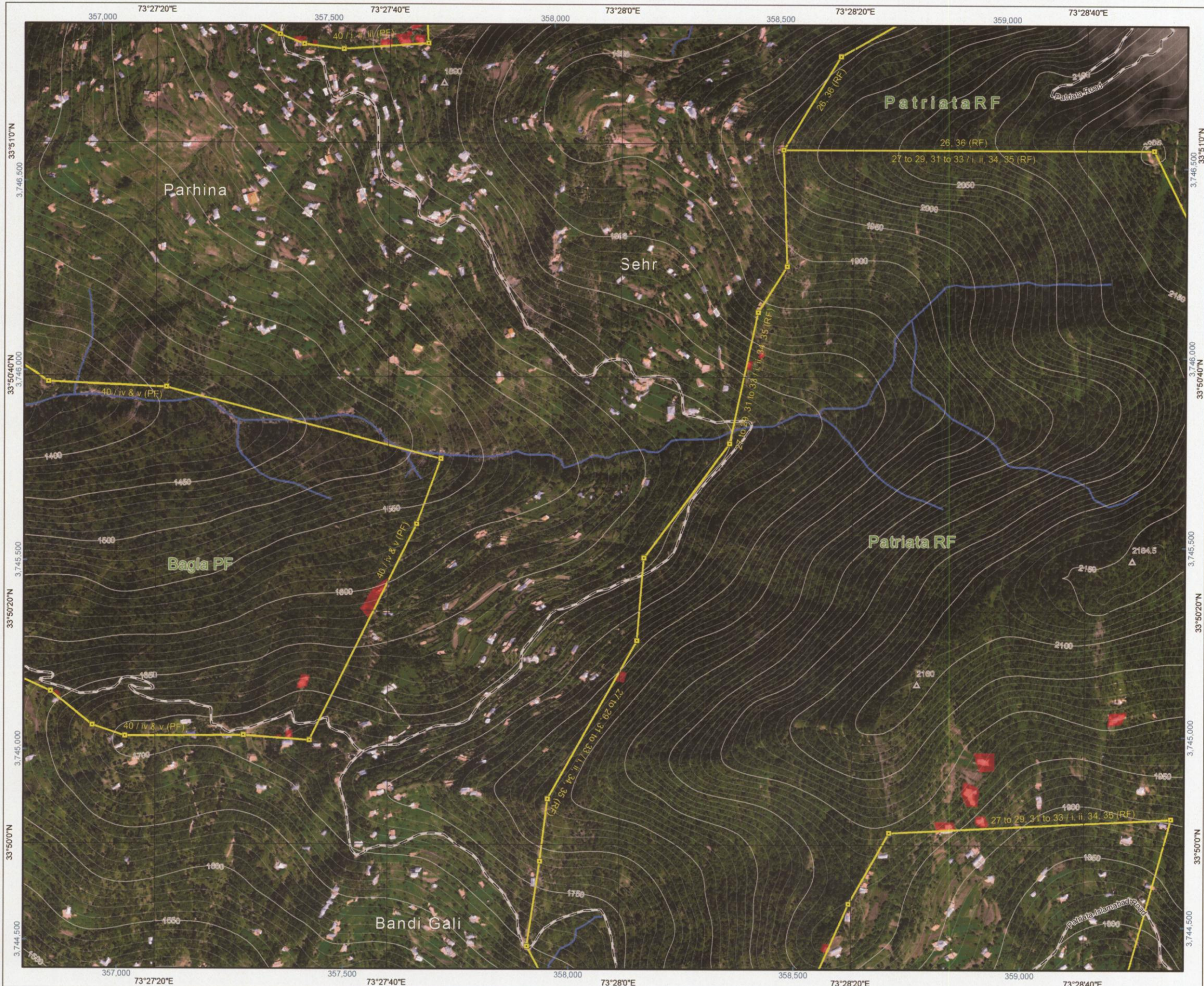
**Map Legend**

- Pillar Mark
  - Forest Boundary
  - Forest Bench Mark
  - Ambiguity Area
  - Inculded Chak
  - Sehadda
  - Murree Forest Division
  - Spot Height (m)
  - Water Channel/Nullah
  - Road
  - Water Pond/Tank
  - Contour (m)
  - Encroachment
- Contour interval: 50m (164 ft)

**Map Credits**

**Map Produced by:** GIS Laboratory, WWF - Pakistan in February, 2013

Copyrights:  
 It is an offence under the Copyright Act to make and issue any copy or copies of this map or any part of this map with or without alterations and additions, unless the prior written permission of the concerned department has been obtained.



**Divisional Forest Officer**  
 Murree Forest Division  
 Punjab Forest Department



**Officer-in-Charge**  
 No. 4 Party,  
 Survey of Pakistan, Murree



**Tehsildar Murree**  
 Punjab Revenue Department



**Manager GIS**  
 GIS Laboratory  
 World Wide Fund for Nature - Pakistan





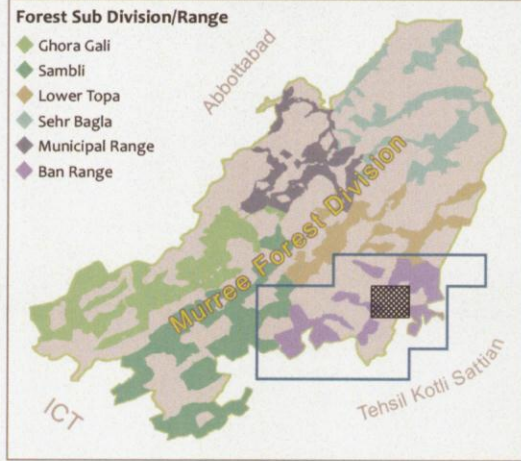
**Map Title**

GIS BASED BOUNDARY DELINEATION OF MURREE FOREST DIVISION INCLUDING THE ENCROACHED FOREST SECTIONS  
 MAP ID : BR/12 (1<sup>ST</sup> EDITION 2013)  
 BAN FOREST RANGE

**Map Locator**

**Forest Sub Division/Range**

- ◆ Ghora Gali
- ◆ Sambli
- ◆ Lower Topa
- ◆ Sehr Bagla
- ◆ Municipal Range
- ◆ Ban Range

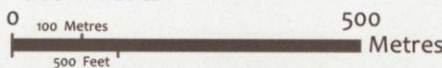


**Map Index**



**Map Scale & Coordinate System**

**Reference Scale:** 1:10,000 on A3 size paper  
 1 inch ~ 278 yards or 1 centimetre ~ 100 metres  
**Coordinate System:** GCS WGS 1984  
 Datum: WGS 1984  
**Grids and Graticule:**  
 Geographic Grid: WGS 1984  
 Value in: DD° MM' SS"  
 Metric Grid: UTM Zone 43S  
 Value in: Metres



**Map Legend**

- Pillar Mark
- Forest Bench Mark
- ▭ Sehadada
- ▲ Spot Height (m)
- Road
- Contour (m)
- Contour interval: 50m (164 ft)
- Forest Boundary
- Ambiguity Area
- ▭ Included Chak
- Murree Forest Division
- Water Channel/Nullah
- Water Pond/Tank
- Encroachment

**Map Credits**

**Map Produced by:** GIS Laboratory, WWF - Pakistan in February, 2013

**Copyrights:**  
 It is an offence under the Copyright Act to make and issue any copy or copies of this map or any part of this map with or without alterations and additions, unless the prior written permission of the concerned department has been obtained.



**Divisional Forest Officer**  
 Murree Forest Division  
 Punjab Forest Department



*[Signature]*  
**Officer-in-Charge**  
 No. 4 Party,  
 Survey of Pakistan, Murree



*[Signature]*  
**Tehsildar Murree**  
 Punjab Revenue Department



*[Signature]*  
**Manager GIS**  
 GIS Laboratory  
 World Wide Fund for Nature - Pakistan





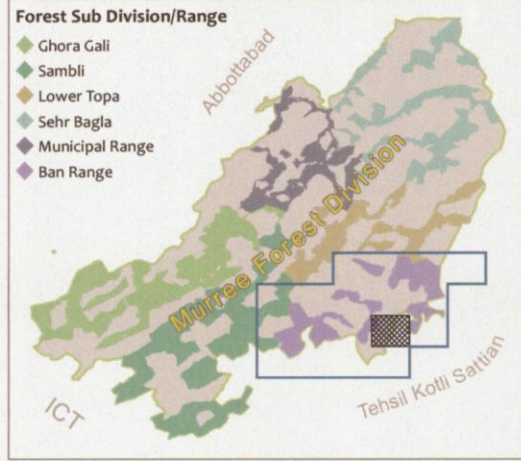
**Map Title**

GIS BASED BOUNDARY DELINEATION OF MURREE FOREST DIVISION INCLUDING THE ENCROACHED FOREST SECTIONS  
 MAP ID : BR/13 (1<sup>st</sup> EDITION 2013)  
 BAN FOREST RANGE

**Map Locator**

**Forest Sub Division/Range**

- ◆ Ghora Gali
- ◆ Sambli
- ◆ Lower Topa
- ◆ Sehr Bagla
- ◆ Municipal Range
- ◆ Ban Range

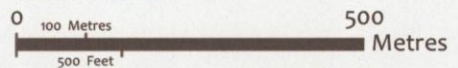


**Map Index**



**Map Scale & Coordinate System**

**Reference Scale:** 1:10,000 on A3 size paper  
 1 inch = 278 yards or 1 centimetre = 100 metres  
**Coordinate System:** GCS WGS 1984  
 Datum: WGS 1984  
**Grids and Graticule:**  
 Geographic Grid: WGS 1984  
 Value in: DD° MM' SS"  
 Metric Grid: UTM Zone 43S  
 Value in: Metres



**Map Legend**

- Pillar Mark
- Forest Bench Mark
- ▭ Sehadha
- ▲ Spot Height (m)
- Road
- Contour (m)  
Contour interval: 50m (164 ft)
- Forest Boundary
- Ambiguity Area
- ▭ Included Chak
- Murree Forest Division
- Water Channel/Nullah
- Water Pond/Tank
- Encroachment

**Map Credits**

**Map Produced by:** GIS Laboratory, WWF - Pakistan in February, 2013

**Copyrights:**  
 It is an offence under the Copyright Act to make and issue any copy or copies of this map or any part of this map with or without alterations and additions, unless the prior written permission of the concerned department has been obtained.



**Divisional Forest Officer**  
 Murree Forest Division  
 Punjab Forest Department



**Officer-in-Charge**  
 No. 4 Party,  
 Survey of Pakistan, Murree



**Tehsildar Murree**  
 Punjab Revenue Department



**Manager GIS**  
 GIS Laboratory  
 World Wide Fund for Nature - Pakistan





**Map Title**

GIS BASED BOUNDARY DELINEATION OF MURREE FOREST DIVISION INCLUDING THE ENCREACHED FOREST SECTIONS  
 MAP ID : BR/14 (1<sup>st</sup> EDITION 2013)  
 BAN FOREST RANGE

**Map Locator**

**Forest Sub Division/Range**



**Map Index**



**Map Scale & Coordinate System**

**Reference Scale:** 1:110,000 on A3 size paper  
 1 inch ~ 278 yards or 1 centimetre ~ 100 metres  
**Coordinate System:** GCS WGS 1984  
 Datum: WGS 1984  
**Grids and Graticule:**  
 Geographic Grid: WGS 1984  
 Value in: DD° MM' SS"  
 Metric Grid: UTM Zone 43S  
 Value in: Metres



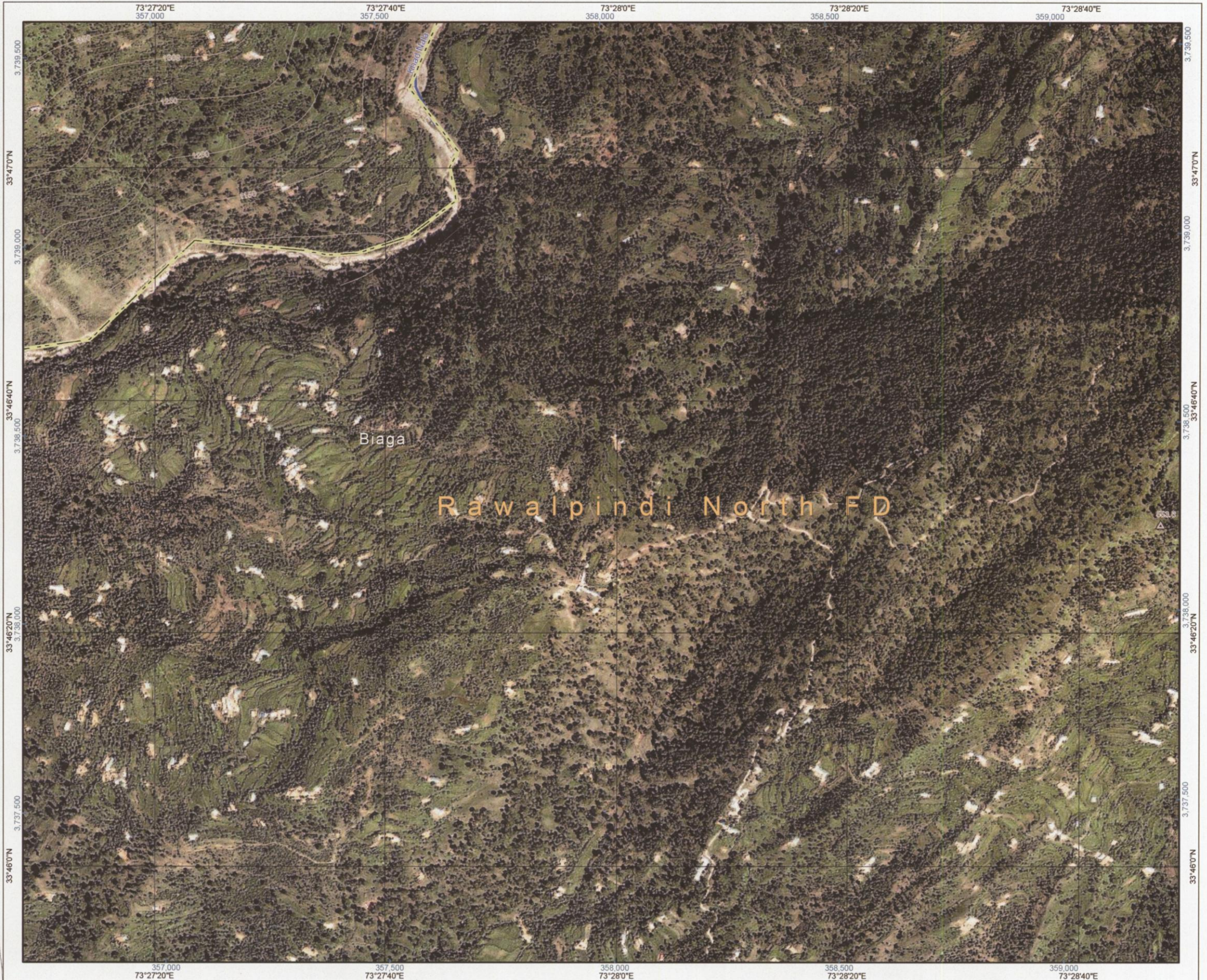
**Map Legend**

- Pillar Mark
  - Forest Boundary
  - Forest Bench Mark
  - Ambiguity Area
  - Inculded Chak
  - Sehadda
  - Murree Forest Division
  - Spot Height (m)
  - Water Channel/Nullah
  - Road
  - Water Pond/Tank
  - Contour (m)
  - Encroachment
- Contour interval: 50m (164 ft)

**Map Credits**

**Map Produced by:** GIS Laboratory, WWF - Pakistan in February, 2013

**Copyrights:**  
 It is an offence under the Copyright Act to make and issue any copy or copies of this map or any part of this map with or without alterations and additions, unless the prior written permission of the concerned department has been obtained.



**Divisional Forest Officer**  
 Murree Forest Division  
 Punjab Forest Department



**Officer-in-Charge**  
 No. 4 Party,  
 Survey of Pakistan, Murree



**Tehsildar Murree**  
 Punjab Revenue Department



**Manager GIS**  
 GIS Laboratory  
 World Wide Fund for Nature - Pakistan





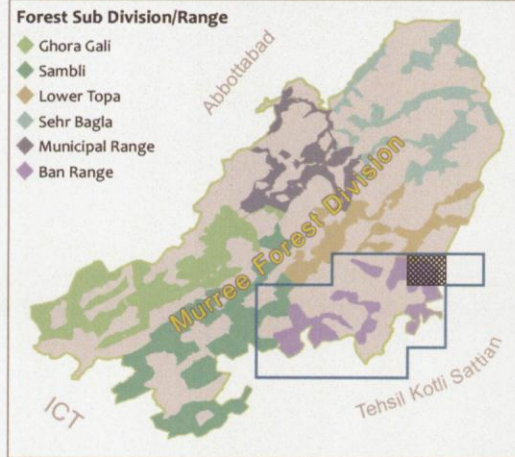
**Map Title**

GIS BASED BOUNDARY DELINEATION OF MURREE FOREST DIVISION INCLUDING THE ENCROACHED FOREST SECTIONS  
 MAP ID : BR/15 (1<sup>ST</sup> EDITION 2013)  
 BAN FOREST RANGE

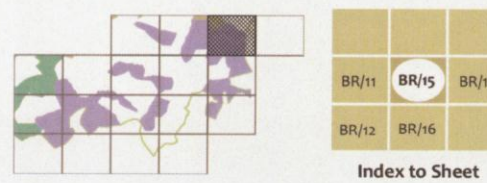
**Map Locator**

**Forest Sub Division/Range**

- ◆ Ghora Gali
- ◆ Sambli
- ◆ Lower Topa
- ◆ Sehr Bagla
- ◆ Municipal Range
- ◆ Ban Range

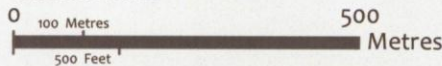


**Map Index**



**Map Scale & Coordinate System**

**Reference Scale:** 1:10,000 on A3 size paper  
 1 inch ~ 278 yards or 1 centimetre ~ 100 metres  
**Coordinate System:** GCS WGS 1984  
 Datum: WGS 1984  
**Grids and Graticule:**  
 Geographic Grid: WGS 1984  
 Value in: DD° MM' SS"  
 Metric Grid: UTM Zone 43S  
 Value in: Metres



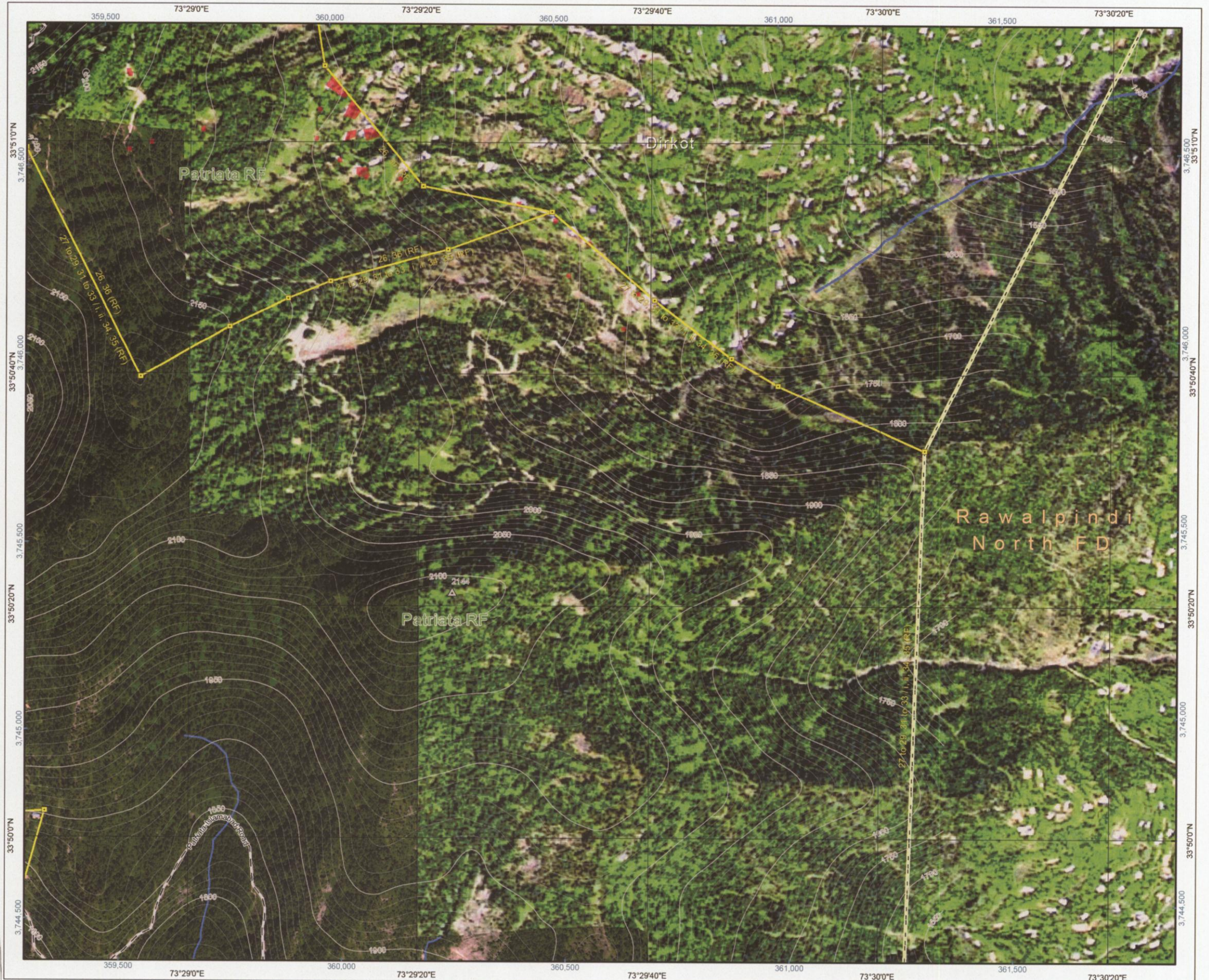
**Map Legend**

- Pillar Mark
- Forest Bench Mark
- ▭ Sehadha
- ▲ Spot Height (m)
- Road
- Contour (m)  
Contour interval: 50m (164 ft)
- Forest Boundary
- Ambiguity Area
- Included Chak
- Murree Forest Division
- Water Channel/Nullah
- Water Pond/Tank
- Encroachment

**Map Credits**

Map Produced by: GIS Laboratory, WWF - Pakistan in February, 2013

Copyrights:  
 It is an offence under the Copyright Act to make and issue any copy or copies of this map or any part of this map with or without alterations and additions, unless the prior written permission of the concerned department has been obtained.



**Divisional Forest Officer**  
 Murree Forest Division  
 Punjab Forest Department



**Officer-in-Charge**  
 No. 4 Party,  
 Survey of Pakistan, Murree



**Tehsildar Murree**  
 Punjab Revenue Department



**Manager GIS**  
 GIS Laboratory  
 World Wide Fund for Nature - Pakistan





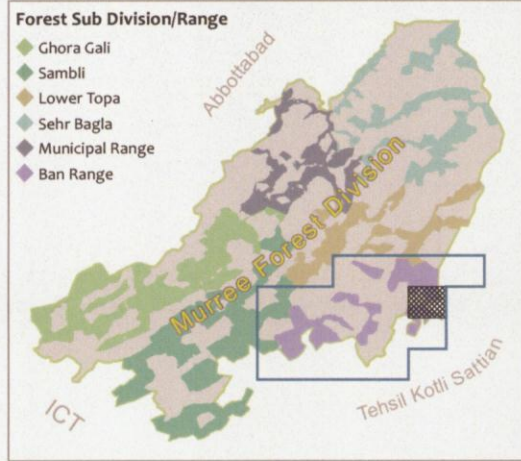
**Map Title**

GIS BASED BOUNDARY DELINEATION OF MURREE FOREST DIVISION INCLUDING THE ENCROACHED FOREST SECTIONS  
 MAP ID : BR/16 (1<sup>st</sup> EDITION 2013)  
 BAN FOREST RANGE

**Map Locator**

**Forest Sub Division/Range**

- ◆ Ghora Gali
- ◆ Sambli
- ◆ Lower Topa
- ◆ Sehr Bagla
- ◆ Municipal Range
- ◆ Ban Range



**Map Index**



**Map Scale & Coordinate System**

**Reference Scale:** 1:10,000 on A3 size paper  
 1 inch ~ 278 yards or 1 centimetre ~ 100 metres  
**Coordinate System:** GCS WGS 1984  
 Datum: WGS 1984  
**Grids and Graticule:**  
 Geographic Grid: WGS 1984  
 Value in: DD° MM' SS"  
 Metric Grid: UTM Zone 43S  
 Value in: Metres



**Map Legend**

- Pillar Mark
- Forest Bench Mark
- ▭ Sehadha
- ▲ Spot Height (m)
- Road
- Contour (m)
- Contour interval: 50m (164 ft)
- Forest Boundary
- Ambiguity Area
- ▭ Included Chak
- Murree Forest Division
- Water Channel/Nullah
- Water Pond/Tank
- Encroachment

**Map Credits**

**Map Produced by:** GIS Laboratory, WWF - Pakistan in February, 2013

Copyrights:  
 It is an offence under the Copyright Act to make and issue any copy or copies of this map or any part of this map with or without alterations and additions, unless the prior written permission of the concerned department has been obtained.



**Divisional Forest Officer**  
 Murree Forest Division  
 Punjab Forest Department



**Officer-in-Charge**  
 No. 4 Party,  
 Survey of Pakistan, Murree



**Tehsildar Murree**  
 Punjab Revenue Department



**Manager GIS**  
 GIS Laboratory  
 World Wide Fund for Nature - Pakistan





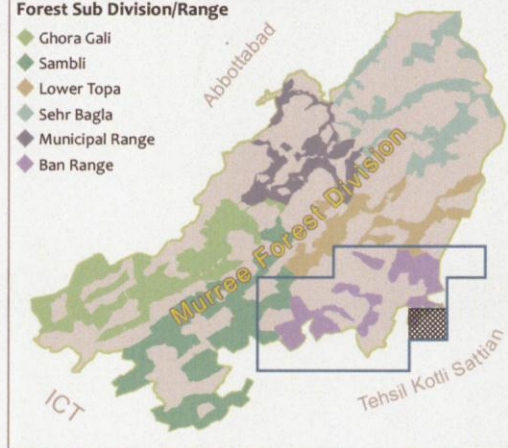
**Map Title**

GIS BASED BOUNDARY DELINEATION OF MURREE FOREST DIVISION INCLUDING THE ENCROACHED FOREST SECTIONS  
 MAP ID : BR/17 (1<sup>st</sup> EDITION 2013)  
 BAN FOREST RANGE

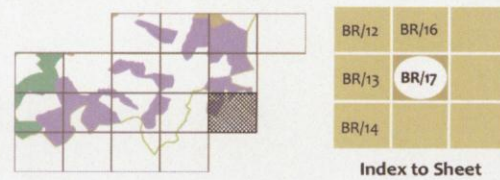
**Map Locator**

**Forest Sub Division/Range**

- ◆ Ghora Gali
- ◆ Sambli
- ◆ Lower Topa
- ◆ Sehr Bagla
- ◆ Municipal Range
- ◆ Ban Range



**Map Index**



**Map Scale & Coordinate System**

**Reference Scale:** 1:10,000 on A3 size paper  
 1 inch ~ 278 yards or 1 centimetre ~ 100 metres  
**Coordinate System:** GCS WGS 1984  
 Datum: WGS 1984  
**Grids and Graticule:**  
 Geographic Grid: WGS 1984  
 Value in: DD° MM' SS"  
 Metric Grid: UTM Zone 43S  
 Value in: Metres



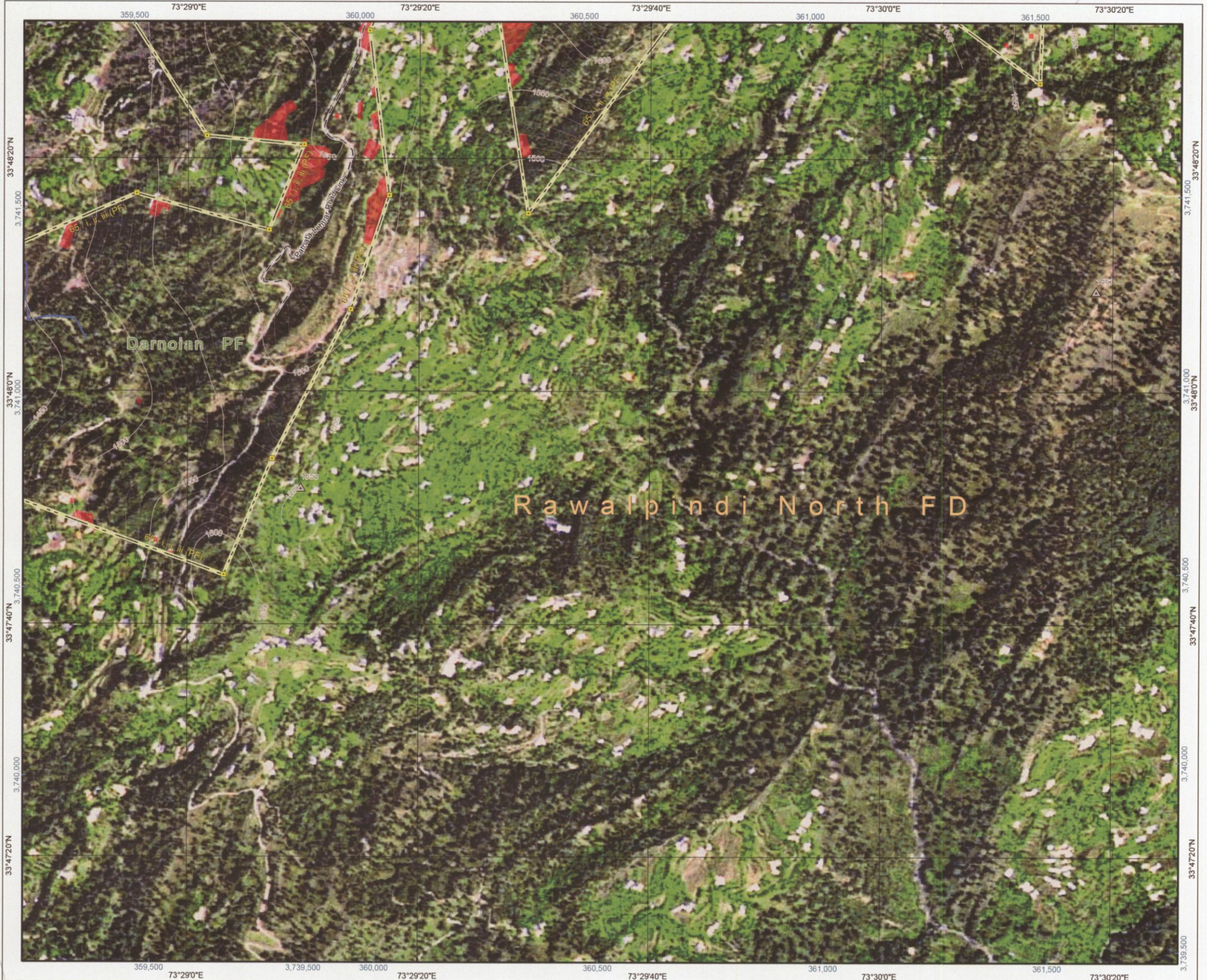
**Map Legend**

- Pillar Mark
- Forest Bench Mark
- ▭ Sehadha
- ▲ Spot Height (m)
- Road
- Contour (m)  
Contour interval: 50m (164 ft)
- Forest Boundary
- Ambiguity Area
- Inculted Chak
- Murree Forest Division
- Water Channel/Nullah
- Water Pond/Tank
- Encroachment

**Map Credits**

Map Produced by: GIS Laboratory, WWF - Pakistan in February, 2013

**Copyrights:**  
 It is an offence under the Copyright Act to make and issue any copy or copies of this map or any part of this map with or without alterations and additions, unless the prior written permission of the concerned department has been obtained.



**Divisional Forest Officer**  
 Murree Forest Division  
 Punjab Forest Department



**Officer-in-Charge**  
 No. 4 Party,  
 Survey of Pakistan, Murree



**Tehsildar Murree**  
 Punjab Revenue Department



**Manager GIS**  
 GIS Laboratory  
 World Wide Fund for Nature - Pakistan





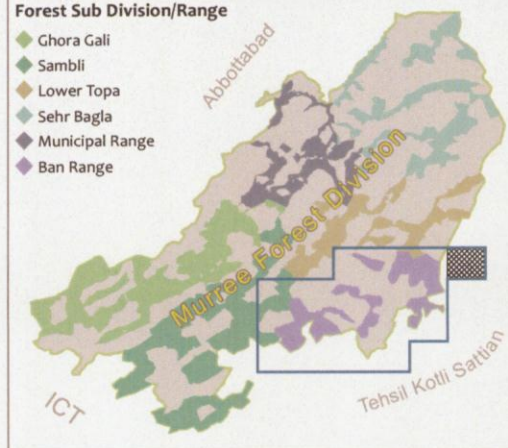
**Map Title**

GIS BASED BOUNDARY DELINEATION OF MURREE FOREST DIVISION INCLUDING THE ENCROACHED FOREST SECTIONS  
 MAP ID : BR/18 (1<sup>st</sup> EDITION 2013)  
 BAN FOREST RANGE

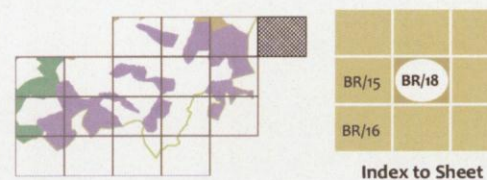
**Map Locator**

**Forest Sub Division/Range**

- ◆ Ghora Gali
- ◆ Sambli
- ◆ Lower Topa
- ◆ Sehr Bagla
- ◆ Municipal Range
- ◆ Ban Range



**Map Index**



**Map Scale & Coordinate System**

**Reference Scale:** 1:10,000 on A3 size paper  
 1 inch ~ 278 yards or 1 centimetre ~ 100 metres  
**Coordinate System:** GCS WGS 1984  
 Datum: WGS 1984  
**Grids and Graticule:**  
 Geographic Grid: WGS 1984  
 Value in: DD° MM' SS"  
 Metric Grid: UTM Zone 43S  
 Value in: Metres



**Map Legend**

- Pillar Mark
- Forest Bench Mark
- ▭ Sehadha
- ▲ Spot Height (m)
- Road
- Contour (m)  
Contour interval: 50m (164 ft)
- Forest Boundary
- Ambiguity Area
- ▭ Incuded Chak
- Murree Forest Division
- Water Channel/Nullah
- Water Pond/Tank
- Encroachment

**Map Credits**

**Map Produced by:** GIS Laboratory, WWF - Pakistan in February, 2013

**Copyrights:**  
 It is an offence under the Copyright Act to make and issue any copy or copies of this map or any part of this map with or without alterations and additions, unless the prior written permission of the concerned department has been obtained.



**Divisional Forest Officer**  
 Murree Forest Division  
 Punjab Forest Department



**Officer-in-Charge**  
 No. 4 Party,  
 Survey of Pakistan, Murree



**Tehsildar Murree**  
 Punjab Revenue Department



**Manager GIS**  
 GIS Laboratory  
 World Wide Fund for Nature - Pakistan

